



MPL



DESCRIPTION

MPL is an outdoor lighting solution for streets, highways, parking lots and more. It offers certified quality and high-efficiency LEDs for maximum performance. Available in power options ranging from 10W to 120W, it ensures precise lighting with adaptable optics. Built for durability (100,000 hours) and corrosion resistance (C4), MPL includes safety features and energy-saving dimming profiles. Eco-friendly with a low carbon footprint, it's the perfect choice for sustainable outdoor lighting.

APPLICATIONS

MPL is the perfect lighting solution for diverse outdoor environments, including streets, highways, parking lots, railway platforms, pedestrian zones, parks and bike paths.

BENEFITS

- **Reliable producer:** Designed, developed and manufactured by ENIM, a trusted EU producer.
- **Certified Quality:** ENEC, ENEC+, RoHS, EPD certifications ensuring compliance with all EU road requirements.
- **Superior Efficiency:** Advanced technology with high-efficiency LEDs for maximum performance.
- **Versatile Power Options:** Ranges from 10 W to 120 W, tailored to fit any lighting project.
- **Adaptable Optics:** A wide range of optics ensures precise lighting for diverse applications.
- **Engineered for Longevity:** Built to last 100,000 hours (L95 B10).
- **Corrosion Resistance:** Corrosion resistance class C4, ensuring durability in harsh environments.
- **SMART savings:** time dimming profiles DDF's for even more energy reduction.
- **Easier installation:** Available with an extended cable option.
- **Sustainability:** EPD certificate ensures low carbon emissions and eco-friendly materials.



TECHNICAL INFORMATION:



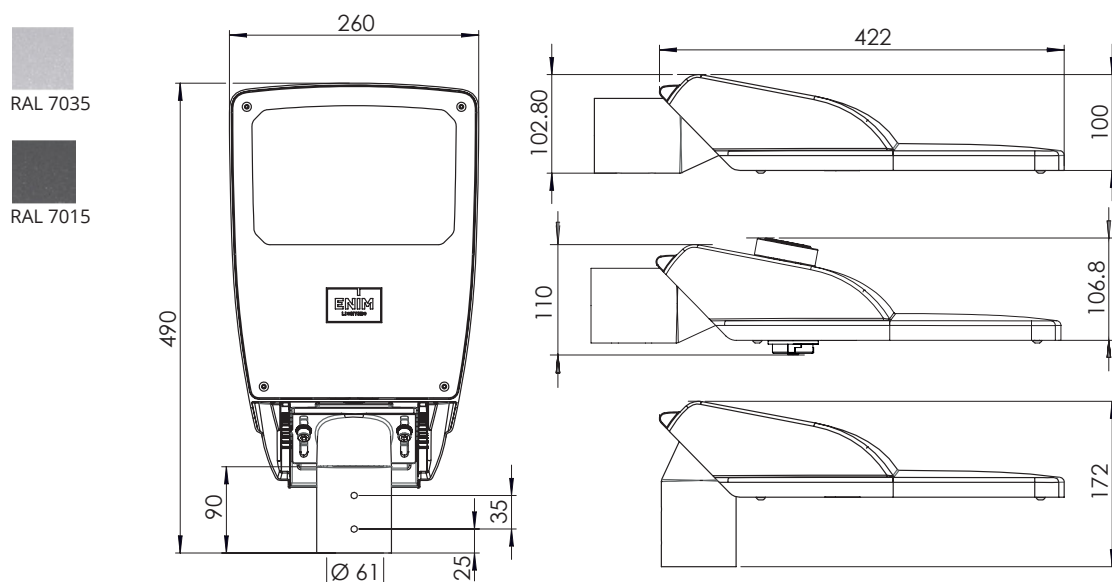
ELECTRICAL	V	Input voltage	180-264VAC
	Hz	Rated voltage	50-60 Hz
	W	Luminaire wattage	10 to 120
	Cosφ	Power factor	≥ 0.95 @100% load
OPTICAL	Lm	Luminous flux	1339-17760
	Lm/W	Luminous efficacy	Up to 170
	K	Color temperature	2700/3000/4000 and 5700 for pedestrian crossing
	Tg	Performance temperature	25 °C
	C°	Ambient temperature range	-40°C ≤ Ta ≤ +50 °C 10-100 W -40 °C ≤ Ta ≤ +40 °C 110-120 W
	CRI	Color rendering index	≥70

Number of LED's	8			16			24				
Power	10W	20W	20W	30W	40W	50W	30W	40W	50W	60W	70W
Luminous Flux, Lm	1340-1630	2420-2920	2640-3220	4140-4920	5320-6360	6350-7700	4200-4980	5560-6560	6750-8050	7860-9420	8890-10780
Efficacy, Lm/W	134-163	121-146	132-161	138-164	133-159	127-154	140-166	139-164	135-161	131-157	127-154

Number of LED's	32									
Power	30W	40W	50W	60W	70W	80W	90W	100W	110W	120W
Luminous Flux, Lm	4230-5100	5600-6720	6850-8300	8100-9840	9310-11340	10480-12720	11610-13950	12600-15400	13310-16500	14280-17760
Efficacy, Lm/W	141-170	140-168	137-166	135-164	133-162	131-159	129-155	126-154	121-150	119-148

Chromatic tolerance (original MacAdam)	Not higher than 5
Life expectancy L/B	L95 B10 by 100000 hrs (Ta = 25 °C)

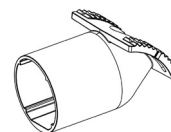
HOUSING	Size	422 mm x 260 mm x 100 mm
	Weight	max 5 kg
	Body material	Heat sink: cast aluminium, painted
	Protection against fogging	The luminaire design incorporates a pressure-equalizing moisture/dust filter that prevents moisture condensation in the luminaire housing
	Installation	Adjustable bracket: angle -20° to +20°/25°, Ø 60-76 mm, Ø 42-60 mm



OPTICS	Optical cover	Tempered safety glass
	Light source	OSRAM/LUMILEDS
	Optics	Asymmetric optics lens
	Optic type	Very carefully selected optics suppliers, the optics are transparent to ensure minimal light loss
	Maintenance	Optical module sealed for life. No internal cleaning required
	Protection against light pollution	0 candela light emission above 90°

DRIVER	Input voltage	180 – 264VAC
	Intelligent temperature Guard (ITG)	The intelligent temperature guard protects the LED driver from thermal overheating by reducing the output power or switching off in case of operation above the thermal limits of the luminaire or ballast
	External temperature management (ETM + NTC)	ETM protects the LED module against thermal overstress. An external temperature sensor (NTC) detects the LED module temperature (in fixtures over 100 W of power) and the LED driver will limit the output current according to this temperature
	Overvoltage with a variable surge protection	N/L – 10 kV, P/(N/L) - 10 kV
	Interfaces	One4all (DALI, DALI2, DT6, DSI, switchDIM, corridorFunction), NFC connection, Ready2mains (configuration and dimming via the mains), U6Me2 programming protocol, Chronostep – automatic luminaire dimming, Power-on level

OPTIONAL	Sockets for various smart control sensors.	
	D4I ZHAGA TOP-BOTTOM / D4I ZHAGA BOTTOM / D4I ZHAGA TOP / NEMA TOP	
	Accessories	
	Code	Name
	MET0169-1	MPL bracket Ø76mm RAL7035
	MET0169-2	MPL bracket Ø76mm RAL7015
	MET0169-3	MPL bracket Ø76mm RAL9005



REMARKS	CLO		The light output of an LED module reduces over the course of its lifetime. The Constant Light Output (eCLO) function compensates for this natural decline by constantly increasing the output current of the LED driver throughout its lifetime
	Power factor ((Cosφ)	≥ 0.95	
	Recommended mounting height	6 – 12 m	
	Luminaires are ready to install		

LOGISTIC DETAILS:

Full pallet size/cm L*W*H	Number of luminaires per row	Maximum number of rows on the pallet	QTY per pallet/pcs
120 X 80 X 195	6	12	72
Kg per pallet		Volume per pallet	LDM (loading meters), m
Netto	Brutto		
356,4	376,6	1,872 m³	0,4

